

Web-based route planner

The online route-planning tool wege-finden.at allows wheelchair users to plan their way through the city. Both official data and community-generated information are combined to suggest a real-time route to the user.

«There is always a way - through intelligent data management this is also perfectly true for persons with mobility impairments. Urban mobility is for everyone.» (Johannes POSCH)

wege-finden.at

Organisation:	BIS Barriere Informations System
Country/region of origin:	Austria
Beneficiaries targeted:	Persons with mobility impairments
Approach/model/solution:	Web-based navigation system

PROJECT

The information platform wege-finden.at was developed by the consortium partners PlanSinn, ITS Vienna Region, ovos media, PRISMA Solutions, Medizinische Universität Wien, Sonja Gruber, and Heinrich Hoffer by involving a group of the future end users and by cooperating with strategic partners such as VAO (Traffic Information Austria), BIZEPS, Stadt Wien MA 28, and Wiener Linien at an early stage of research.

CURRENT SITUATION & OUTLOOK

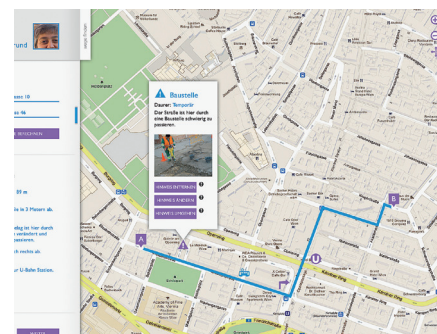
The test phase in Vienna 4th district will serve to further fine-tune the platform. The project is funded by the BMVIT (Federal Ministry for Transport, Innovation & Technology).

FACTS & FIGURES

- Web-based; does not require software installation
- Vienna 4th district route planner launched in spring 2014
- 60 persons per week use the laboratory facilities to practise

PROBLEMS TARGETED

People with disabilities, especially wheelchair users, face many barriers when moving in urban areas. Obstacles can be found everywhere in the public space, e.g. poor accessibility of buildings, curbs, uneven surfaces due to construction work, etc. Due to poorly available data, no satisfactory system for barrier-free routing is currently operating successfully in Europe.



The result of a route query is displayed on the map (projectphase). Additional community information appears and can be commented on and rated by other users.

CONTACT Mrs. Efa DORINGER
 PlanSinn GmbH-Büro für Planung & Kommunikation
 Wiedner Hauptstr. 54/12, 1040 Wien, Austria
 +43-1-585 33 90 21
 doringe@plansinn.at
<http://wege-finden.at>

EXPERT VOTING



Top marks from:

- all voters
- CEE voters

Top marks for:

- access to transport
- targeting all persons with disabilities

Nominated by: PlanSinn