

Zero Project 2017

SOCIAL INDICATORS: RESULTS

Focus on:

Employment

Work and Vocational Education & Training

Amelie Saupe, Essl Foundation
Zero Project, Japan Representative

Zero Project Indicators – 2017 OVERVIEW

WHO?

in 2017: only members of umbrella organisations: DPI, World Federation of the Deaf (WDF), World Blind Union (WBU), EASPD. **155** questionnaires.

WHAT?

21 questions: implementation of UN CRPD (EMPLOYMENT, transport, accessibility, data, education, political participation...) in 2017: first time SDG

WHERE?

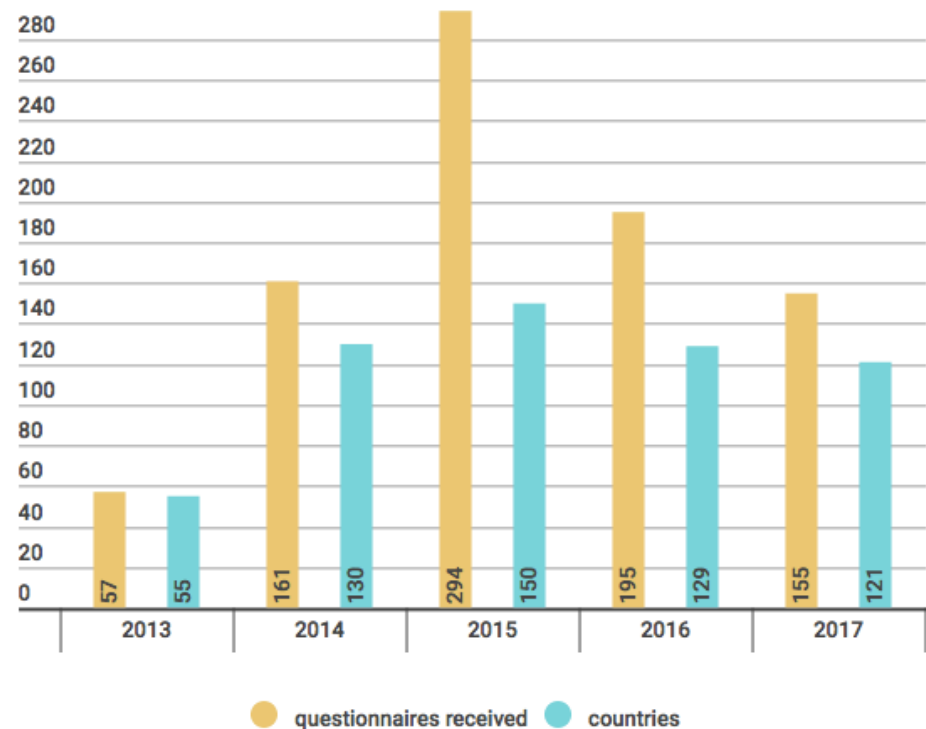
worldwide

in 2017: **121** countries

since 2013: **178** countries

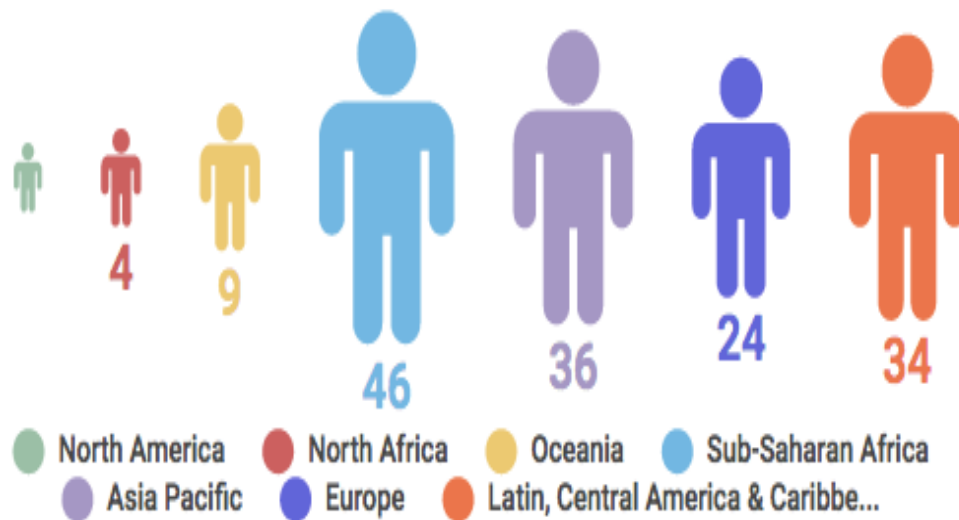
WHY?

to complement the work of national monitoring bodies, federal bureau of statistics and international organizations.

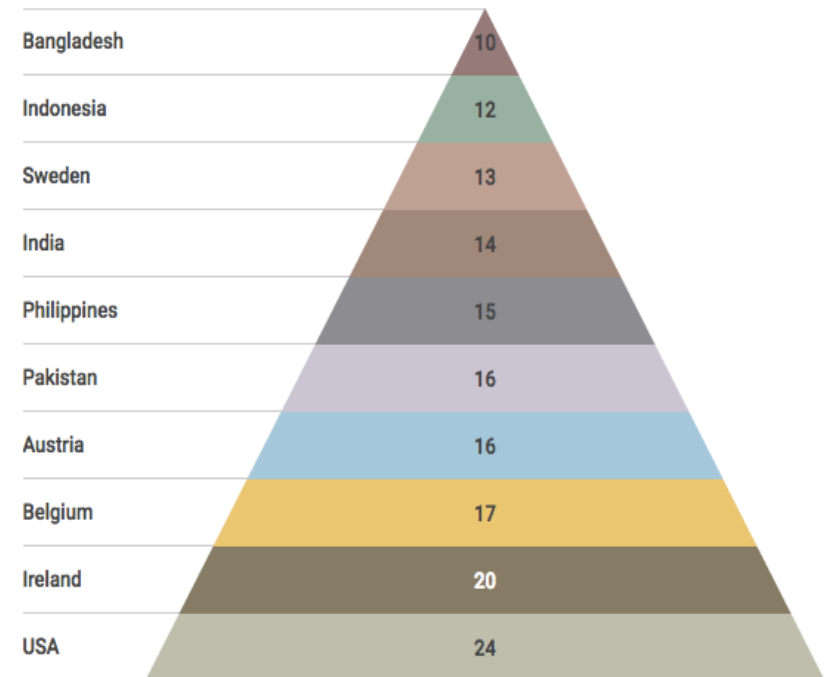


WHERE? worldwide coverage

Number of questionnaires received in 2017
from each REGION:



COUNTRIES with the most responses
received 2013-2017:



RESULTS

Very generally, the Zero Project Social Indicators show that:

EMPLOYMENT:

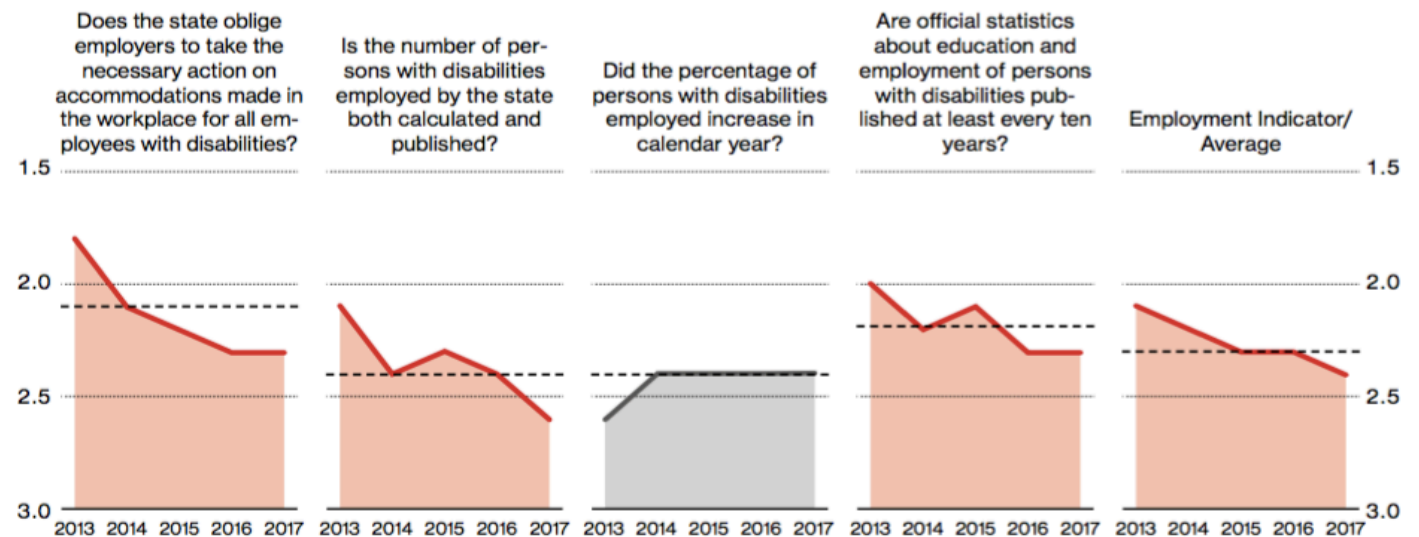
- poor data availability;
- numbers of employed persons with disabilities are deteriorating globally;
- employment quota for public sector does not lead to sufficient employment rates;

DATA:

- lack of sufficient data about the number and conditions of people living in institutions;
- lack of data on young persons with disabilities in the workforce (SDG, Goal 8, Target 5 “full and productive employment including young people and persons with disabilities”)

DISABILITY-INCLUSIVE EMPLOYMENT:

----- Average of years 2013–2017



Make use of the results

issues frequently mentioned

- ✓ compensation payment instead of quota fulfillment;
- ✓ conflict of federal and regional competences;
- ✓ data enumerators/investigators not trained on disability issues;
- ✓ lack of monitoring/ no enforcement;
- ✓ no priority;
- ✓ lack of common definition, common understanding;
- ✓ lack of communication, no knowledge sharing;
- ✓ lack of financial means;
- ✓ ...

Problems that stand in the way of better implementation of the UN CRPD



Make use of the results

good practices on inclusive employment and data collection

	statistics about education and employment
Australia	2015 Survey of Disability, Ageing and Carers (SDAC): demographic and socio-economic profile of people with disabilities compared with the general population.
Australia	National Disability Strategy 2010-2020: support to people with disability who wish to enter employment.
Ireland	Information on the number of people reporting a disability and the type of impairment, along with socio-economic information.
Ireland	report that draws on the rich data from the National Disability Survey (NDS)
	accessible public websites
Denmark	Programme and strategy to shift attitudes towards people with disabilities
Singapore	Open Door Programme (ODP): to encourage employer to hire, train and integrate persons with disabilities, subsidies workplace accommodations.
USA	2014 American Community Survey: employment status by disability status and type.
	number of people with disabilities employed by the government
Australia	report on annual survey by the Australian Public Service, completed by approx. 80,000 employees
Bangladesh	Disability Detection Survey by the Government of Bangladesh: Information is being inserted into a national database, which will include all detailed data on education, employment, services received etc.
USA	report on the Employment of Individuals with Disabilities in the Federal Executive Branch.

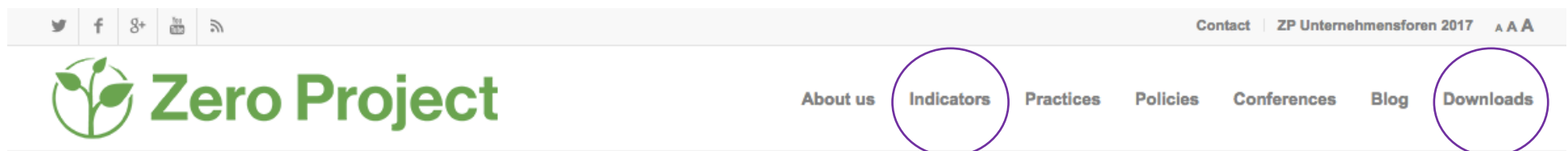
Make use of the results

good practices on inclusive employment and data collection

	support of employment in the private sector
Australia	JobAccess: provides information on financial support, workplace modifications, help with finding and changing jobs, creating flexible work environments, links to career advice and training courses, connecting with employers, providers and peak bodies and a range of other tools and resources for people with disability, employers and service providers.
Bangladesh	Bangladesh Business & Disability Network (BBDN): Representing the collective voice of the private sector on issues related to the inclusion of people with disabilities in the country, the network's aim is to promote the business case of employing disabled workers.
Colombia	Productivity Pact: to offer opportunities to those who are generally marginalized from the labor market. The program is doing knowledge transfer to Public Employment Centres.
Latvia	state employment agency: funding for subsidized jobs and workplace adaptation
New Zealand	Mainstream Employment Programme: provides a package of subsidies, training, and other support to help people with significant disabilities get work and to enable them to gain sustainable employment.
UK	Disability Confident scheme: to help employers make the most of the opportunities provided by employing disabled people. It is voluntary and has been developed by employers and disabled people's representatives.
USA	ADA National Network: resource with regional offices to support employers and employees, provides information, guidance and training on how to implement the Americans with Disabilities Act (ADA)
	existence of a minimum quota of employment for persons with disability
Australia	RecruitAbility: programme to attract and develop applicants with disability and also facilitate cultural changes in selection panels and agency recruitment.

Where to find data for further research

Website:



Report:

ACRONYMS	4
FOREWORD	
Martin Essl, Founder, Essl Foundation	5
EXECUTIVE SUMMARY	6
Table: All 56 Innovative Practices	16
Table: All 11 Innovative Policies	19
MAPS: INNOVATIVE PRACTICES AND POLICIES	
World	20
Europe	22
SECTION 1: SOCIAL INDICATORS	26
World maps of Social Indicators	30
Social Indicators on Employment: 2013–2016	36
The data gap on persons living in institutions	38
World maps of SDGs and Data on Employment	40
SECTION 2: INNOVATIVE PRACTICES 2017	
Overview	42
Factsheets of all Innovative Practices, listed by country A–Z	48
Life Stories	54, 64, 74, 86, 94, 106
SECTION 3: INNOVATIVE POLICIES 2017	
Overview	118
Factsheets of all Innovative Policies, listed by country A–Z	122
Life Stories	130, 140
ANNEX	
Acknowledgements	149
Table: Social Indicators 2017 by theme and region	150
Table: Social Indicators on Employment 2013–2017	151
Table: All 21 questions of the Social Indicator survey 2017	152
Table: All responses from 155 countries	154
Table: Zero Project Research Network 2016–2017	157

Open source database:

- ✓ research results available
- ✓ Everyone can use it!

Zero Project Report 2017

- ✓ Download Section Website
- ✓ Print Version

Contact: Amelie Saupe, Essl Foundation
 Zero Project Japan Representative
a.saupe@zeroproject.org
 +81-90-4523-9361 | Tokyo | Japan