

Training PDF-Accessibility

Alireza Darvishy

**Zurich University of Applied Sciences
Switzerland**

Training Accessible ICT



23th February 2017, 13:10



Accessible PDF?

How accessible is a PDF
with screen reader?



HOTEL ZIMMER RESERVIERUNG
HOTEL ROOM RESERVATION
Zero Project
20.-23. Februar 2018

Reservation deadline: 06.02.2018

Bitte bestätigen Sie an:
Please confirm to:

Fax: +43 1 224 24 710

Mail: reservation.vienna@[REDACTED].com

Vorname <i>First name</i>			Familienname <i>Name</i>		
Wohnadresse <i>Home address</i>					
Postleitzahl <i>ZIP code</i>		Stadt <i>City</i>			Land <i>Country</i>
Telefon <i>Telephone</i>			Fax/E-Mail		
Kreditkartennummer <i>Credit card number</i>			Ablaufdatum <i>Expiry date</i>		



PAVE (PDF Accessibility Validation Engine)



P A V E

Winner of
Code for a Cause 2014
ICCHP Conference, Paris

Step 1: Upload your inaccessible PDF to PAVE

Step 2: PAVE will make the automatic correction of accessibility issues.

Step 3: Make the manual corrections in PAVE

Step 4: Download the accessible PDF document

<http://pave-pdf.org>



Training PDF-Accessibility

Classroom training:

- PAVE online demo
- Students try to make a PDF accessible
- Coaching for students
- Demonstrating the accessible version

YouTube CH Search

PAVE

Introduction FAQ Background information Contact DE EN

Four steps to an accessible PDF

You can use PAVE to make your PDF documents accessible and to interpret conventional reader programs correctly. It does not change the visual layout of your PDF. The ICT Accessibility Lab of the ZHAW School of Engineering which developed PAVE, is making it available free of charge for personal use. Give it a try! If you want to make a large volume of PDFs accessible, please contact us.

1. Upload your PDF document to PAVE.
2. PAVE will make the automatic corrections.
3. Simply make the remaining corrections yourself in PAVE.
4. Now you can download the accessible PDF document. The PDF document will remain on the PAVE server for a maximum of three weeks, unless you delete it manually beforehand.

Start PAVE

0:04 / 15:09 Watch an introduction video on YouTube

zhaw School of Engineering

SBV Schweizerischer Blinden- und Sehbehindertenverband

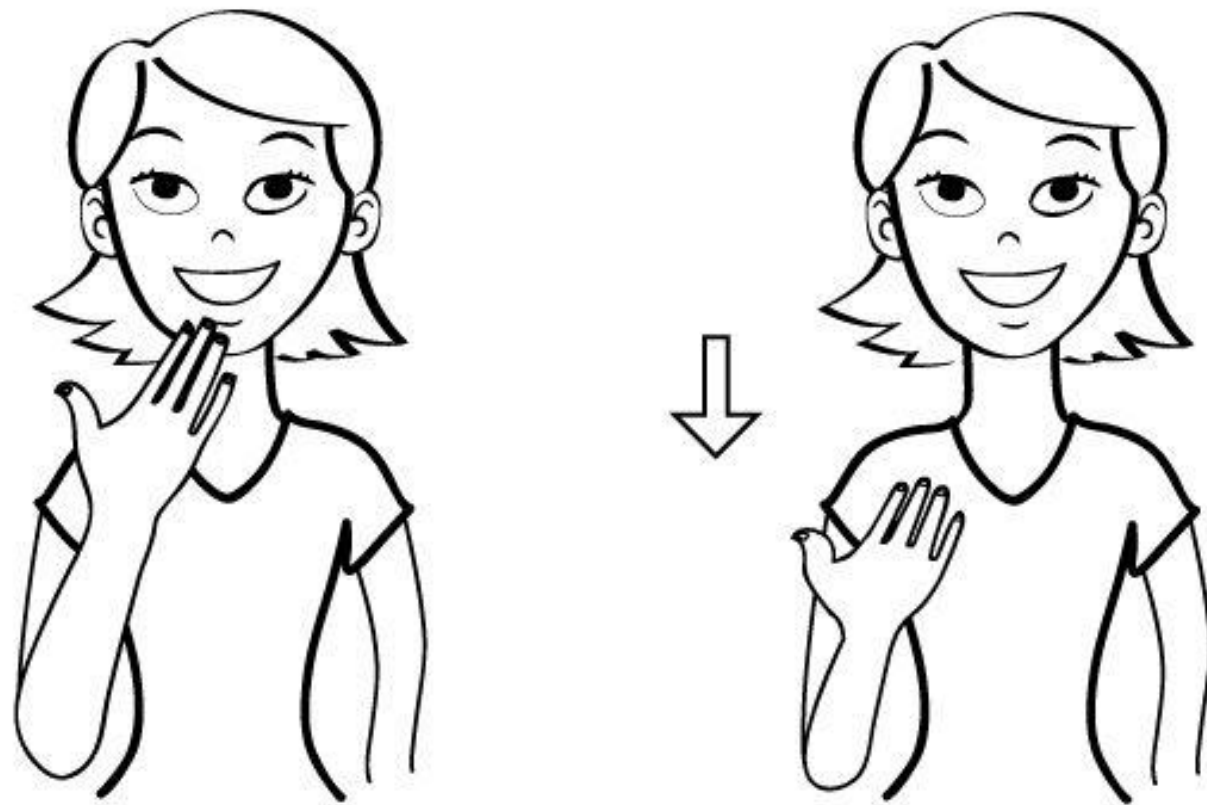
PAVE has been developed by the ICT-Accessibility Lab of the Zurich University of Applied Sciences (ZHAW) in collaboration with the Swiss Federation of the Blind and Visually Impaired.

PAVE Wins First Prize in International Competition

The International Conference on Computers Helping People with Special Needs honors software projects that help persons with disabilities. At this year's final in Paris, the ICT Accessibility Lab team impressed the international jury with PAVE, its groundbreaking open source software, and took first place.

More about the award

Introduction to PAVE v2.0



Thank you!